



Bennie
Equipment



TERBERG KINGLIFTER TRUCK-MOUNTED FORKLIFTS

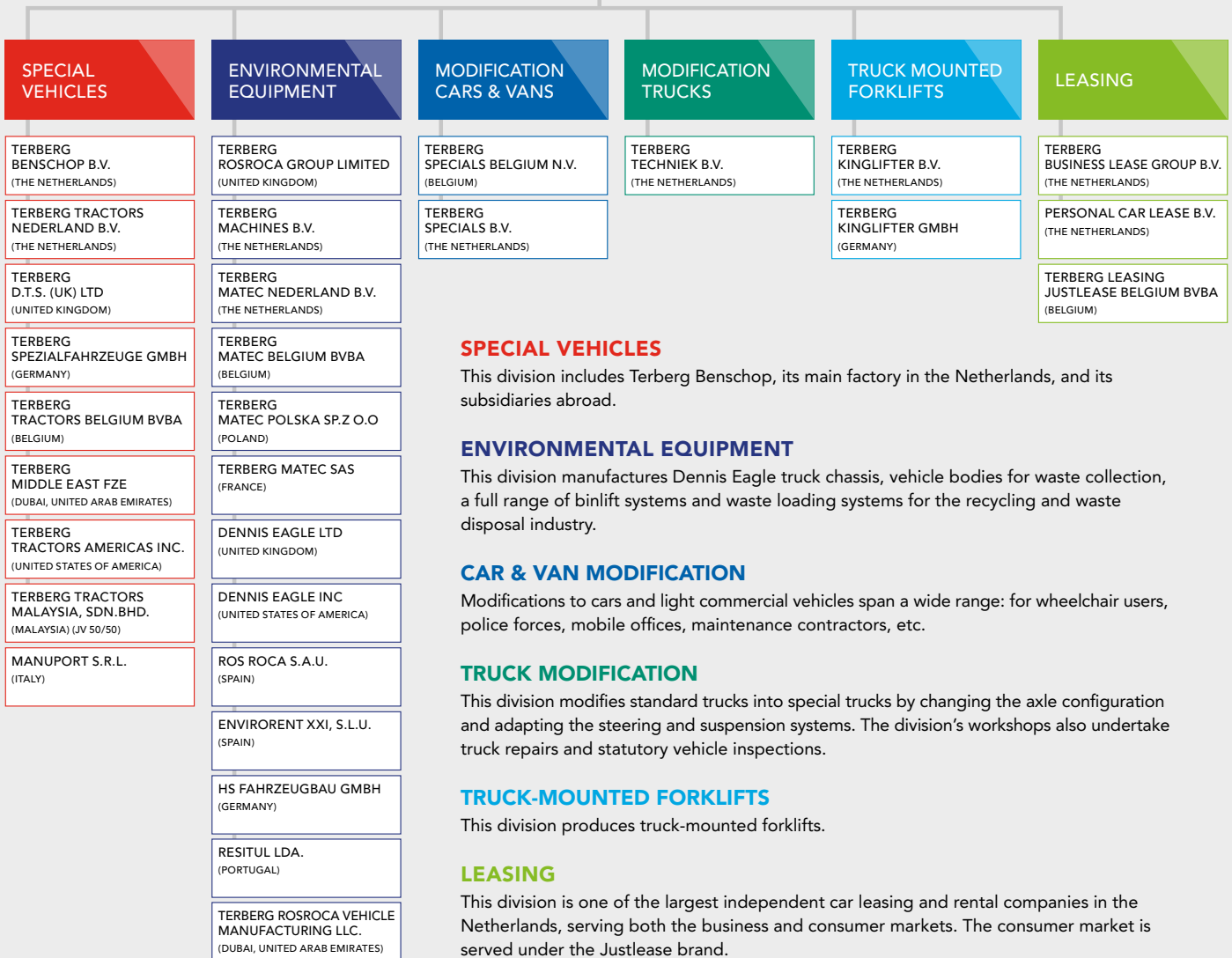
PERFECTLY TAILORED TO YOUR APPLICATION



*"IT'S A POWERFUL UNIT, EASY TO WORK WITH, AND YOU WASTE
LITTLE TIME WAITING AT CUSTOMER SITES."* VAN AMMERS TRANSPORTEN B.V.

CORPORATE INFORMATION

ROYAL TERBERG GROUP B.V. (THE NETHERLANDS)



SPECIAL VEHICLES

This division includes Terberg Benschop, its main factory in the Netherlands, and its subsidiaries abroad.

ENVIRONMENTAL EQUIPMENT

This division manufactures Dennis Eagle truck chassis, vehicle bodies for waste collection, a full range of binlift systems and waste loading systems for the recycling and waste disposal industry.

CAR & VAN MODIFICATION

Modifications to cars and light commercial vehicles span a wide range: for wheelchair users, police forces, mobile offices, maintenance contractors, etc.

TRUCK MODIFICATION

This division modifies standard trucks into special trucks by changing the axle configuration and adapting the steering and suspension systems. The division's workshops also undertake truck repairs and statutory vehicle inspections.

TRUCK-MOUNTED FORKLIFTS

This division produces truck-mounted forklifts.

LEASING

This division is one of the largest independent car leasing and rental companies in the Netherlands, serving both the business and consumer markets. The consumer market is served under the Justlease brand.

MAIN FACTS

- Founded in 1869 • Family-owned • Turnover: € 1,018 billion (2020) • Employees: appr. 2,900
- Companies in 12 countries • Export worldwide: > 100 countries





ROBUST AND EFFICIENT

Terberg Kinglifter B.V. manufactures a wide range of truck-mounted forklifts, under the name Kinglifter. All our high-quality units have a very favourable payload compared with their own weight. As a transport professional you will appreciate the importance of this.

IN ACTION: VIDEOS

The videos on our website demonstrate the versatility of Terberg Kinglifters.



KEY FEATURES



1 Stainless steel plating



2 On-board computer for additional data collection



3 Side-mounted controls and optional wireless remote control

MODELS

We can configure the following basic models to fully meet your requirements:

Kinglifter TKL-S	Compact
Kinglifter TKL-MC/M	Universal
Kinglifter TKS/TKM	Powerful engine

SPECIFICATIONS

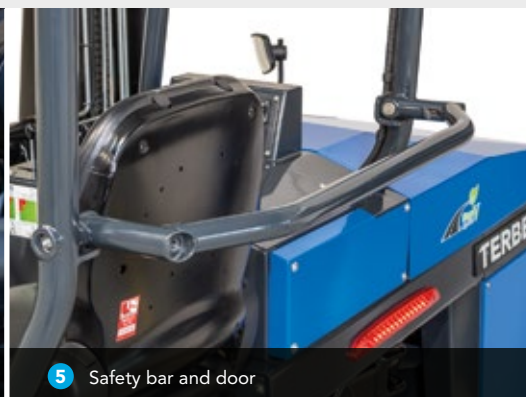


	TKL-S	TKL-MC	TKL-M	TKS	TKM
Engine	Diesel Stage V	Diesel Stage V	Diesel Stage V	Diesel Stage V	Diesel Stage V
Mast type (fixed/sliding)	DGR	DGR or DRS	DGR or DRS	DRR or DRS	DRR or DRS
Max. lifting height (mm)	1800-2800mm	2200-4050mm	2200-4050mm	2400-4050mm	2400-4050mm
Max. lifting capacity (kg)	1500kg	2500kg	2500kg	2500kg	2500kg
Engine rating (hp)	26hp	25hp	25hp	38 or 44hp	38 or 44hp
1-wheel drive	✓	✓	✓		
3-wheel drive	✓	✓	✓	✓	✓
4-way steering		✓	✓	✓	
Front tyres (min.)	140/55	18x7-8	23x8.5-12	23x8.5-12	27x10-12
Rear tyres (max.)	23x8.5-12	27x10-12	10:16.5	10:16.5	10:16.5

DGR = Sliding mast, **DRS** = Roller mast with integrated scissors, **DRR** = Roller mast



4 38 or 44hp Stage V engine



5 Safety bar and door



6 Safety cabin

APPLICATIONS



BEVERAGE DISTRIBUTION

Terberg Kinglifter truck-mounted forklifts. Our compact models are particularly useful when operating in congested city centres, and also in your warehouse.



AGRICULTURAL PRODUCTS

A Terberg Kinglifter with large wheels and three-wheel drive is the perfect choice for deliveries to farms. The high lifting capacity, up to 2500 kg, enables you to handle large bags of fertiliser and similar loads.



BUILDING MATERIALS

For use on construction sites our truck-mounted forklifts can be fitted with large wheels and 4-way steering. With a lifting capacity up to 2500 kg you can handle heavy pallets of building materials.



GAS CYLINDER DISTRIBUTION

The lifting capacity up to 2500 kg enables you to load and unload heavy pallets of cylinders safely. If you make many city centre deliveries then one of our compact units is a good choice, with a lifting capacity of 1500 kg.



DEFENCE

Defence equipment often has to operate in challenging environments. This is where the robust design and high reliability of our truck-mounted forklifts stand out.



RECYCLING

Pallets of materials for recycling often have to be collected from industrial and residential sites where conventional forklift trucks are not available.



APPLICATIONS



	TKL-S	TKL-MC	TKL-M	TKS	TKM
Beverage distribution	✓				
Agricultural products		✓	✓	✓	✓
Building materials		✓	✓	✓	✓
Gas cylinders		✓	✓	✓	
Defence		✓	✓	✓	✓
Recycling		✓	✓	✓	

KINGLIFTER TKS/TKM POWERFUL ENGINE

The TKS (static mast) and TKM (moving mast) Kinglifters feature 38 or 44hp Stage V engines, enabling you to unload a truck even more quickly. The higher engine power saves valuable time during unloading. The side-mounted controls make mounting and demounting the forklift to the truck safer and easier. A wireless remote control is available as an option. The easily accessible, progressively sprung seat and high seat position resulting in good visibility make the driver's work more comfortable, efficient and safer. The usual Kinglifter options are available to tailor the unit to your application:

- 3-wheel drive
- 4-way steering
- Choice of chassis widths and mast heights
- Choice of wheel sizes
- 180 degree steering angle



KINGLIFTER TKS



Patented Terberg duplex roller mast with a capacity of 2000 or 2500 kg and a lifting height of 2400 to 4050 mm, fixed or retractable wheel arms, a choice of forks and wheel sizes, and many options.

The Kinglifter TKM is a moving mast unit. The duplex roller mast is patented by Terberg and has a lifting capacity of 2000 or 2500 kg and a lifting height of 2400 to 4050 mm. The unit can be fitted with a range of forks and wheels. The moving mast model can be fitted with reachforks or the scissor mast with fixed forks to provide SuperReach functionality.

In short, there is always suitable Terberg Kinglifter TKS or TKM for your application. To project the right corporate image your truck mounted forklift can be painted in your choice of colour. Special attention has been made to the build quality of every Kinglifter, ensuring that it will look good for a long time, and in turn increasing its residual value.

KEY FEATURES

Powerful Yanmar engine: 3-cylinder, direct injection, 38 or 44hp, Stage V engine

3-wheel drive for excellent handling on steeper slopes, slippery surfaces and unpaved unloading sites

Optional 4-way steering for even better manoeuvring (parallel operations for tight sites and narrow doorways)

Optimised power transfer and good off-road handling

Lifting capacity 2000 or 2500 kg

Lifting height 2400 - 4050 mm



KINGLIFTER TKM



SPECIFICATIONS

	TKS	TKM
Engine	Diesel Stage V	Diesel Stage V
Mast type (fixed/sliding)	DGR or DRS	DRR or DRS
Max. lifting height (mm)	2400-4050mm	2400-4050mm
Max. lifting capacity (kg)	2500kg	2500kg
Engine rating (hp)	38 or 44hp	38 or 44hp
1-wheel drive		
3-wheel drive	✓	✓
4-way steering	✓	
Tyres, front (min.)	23x8.5-12	27x10-12
Tyres, rear (max.)	10:16.5	10:16.5



KINGLIFTER TKL-MC/M UNIVERSAL

The Kinglifter MC/M is the most versatile model with the widest range of options. The larger distance between the wheels not only increases stability during driving, loading and unloading, but also offers greater operational flexibility as the side shift range is increased. This model is available with either 1 or 3-wheel drive, and has a 25hp Stage V direct injection diesel engine.

The unit has a duplex sliding mast or the patented Terberg duplex roller mast with a lifting capacity of 2000 or 2500 kg and a lifting height of 2200 to 4050 mm, fixed or retractable wheel arms, a choice of forks and wheel types, and many options. The MC and M models differ in width, the M is 100 mm wider than the MC.



KINGLIFTER TKL-M

KEY FEATURES

Powerful Yanmar engine: 3-cylinder, direct injection, 25hp, Stage V engine (MC/M)

1 or 3-wheel drive for excellent handling on steeper slopes, slippery surfaces and unpaved unloading sites

Optional 4-way steering for even better manoeuvring (parallel operations for tight sites and narrow doorways)

Optimised power transfer and good off-road handling

Lifting capacity 2000 or 2500 kg

Lifting height 2200 - 4050 mm



KINGLIFTER TKL-MC



In short, there is always a suitable Terberg Kinglifter MC/M for your application. To project the right corporate image your truck-mounted forklift needs to continue looking good for a long time. This also increases its residual value. For this reason Terberg gives special attention to excellent corrosion protection. The frame, mast and other steel components receive a cathoretic primer followed by powder coating. The panels are made of stainless steel. The wheel arms, which always suffer damage during operations, are hot-dip galvanised. The 4-way models have wheel arms with a cathoretic primer and powder coating. All models are fitted with work lights, rotating beacon, parking brake, power steering and 180 degree steering angle.

SPECIFICATIONS

	TKL-MC	TKL-M
Engine	Diesel Stage V	Diesel Stage V
Mast type (fixed/sliding)	DGR or DRS	DGR or DRS
Max. lifting height (mm)	2200-4050mm	2200-4050mm
Max. lifting capacity (kg)	2500kg	2500kg
Engine rating (hp)	25hp	25hp
1-wheel drive	✓	✓
3-wheel drive	✓	✓
4-way steering	✓	✓
Tyres, front (min.)	18x7-8	18x7-8
Tyres, rear (max.)	27x10-12	10:16.5





KINGLIFTER TKL-S COMPACT

Kinglifter truck-mounted forklifts are extremely robust. The excellent ratio between the weight of the units and their lifting capacity contributes to a high operational economy.

The Kinglifter TKL-S is the most compact model in the Terberg Kinglifter range. It is the perfect choice if you

KINGLIFTER TKL-S



need a compact unit with a low weight. This unit is powerful for its size, and available in many versions. As standard it is fitted with a 26hp Stage V diesel engine and it can be supplied with 1 or 3-wheel drive, a mast with a lifting capacity of 1500 kg and a lifting height of 1800 to 2800 mm, fixed or retractable wheel arms, a range of forks and wheels, and many options.

If you opt for a 1800 mm mast it can be built without a cab, for easier access to narrow and small spaces. The frame, mast and other steel components receive a cathaphoretic primer followed by powder coating. The panels are made of stainless steel and the wheel arms which often suffer damage in use are hot-dip galvanised. All models are fitted with work lights, rotating beacon, parking brake and power steering.



KEY FEATURES

26hp fuel-efficient 3-cylinder Yanmar diesel Stage V engine with direct fuel injection

Lifting capacity 1500 kg

1 or 3-wheel drive for excellent handling on steeper roads, slopes, slippery surfaces and unpaved unloading sites

Lifting height 1800 - 2800 mm

Choice of fixed or hydraulically operated wheel arms



SPECIFICATIONS

	TKL-S
Engine	Diesel Stage V
Mast type (fixed/sliding)	DGR
Max. lifting height (mm)	1800-2800mm
Max. lifting capacity (kg)	1500kg
Engine rating (hp)	26hp
1-wheel drive	✓
3-wheel drive	✓
4-way steering	
Tyres, front (min.)	140/55
Tyres, rear (max.)	23x8.5-12

KINGLIFTER SERVICING

The design of our forklifts and ease of maintenance ensure a long lifespan. During that lifespan we, or your local Terberg dealer, can support you with technical and operational advice, maintenance and repairs, rapid supply of spare parts, and training for your drivers and fitters.

Our Service department has a database of all units we have ever supplied and knows exactly what components are fitted to them. As a vehicle manufacturer we have developed thorough inspection procedures to ensure that you meet all statutory requirements and that your personnel can work safely and efficiently.



KINGLIFTER FEATURES



SUPERREACH

Combines the patented Terberg scissor system with telescopic forks. This results in an extended reach for loading and unloading.

PATENTED SCISSOR SYSTEM

The patented Terberg scissor system can be used with fixed or telescopic forks (SuperReach). The scissor unit has a low weight, yet is very robust.

STEERING

Terberg Kinglifter offers an 180 degree steering angle for better manoeuvrability.

RETRACTABLE WHEEL ARMS

The hydraulically retractable wheel arms reduce the space needed to mount the unit to a truck, and extend the reach while loading.

4-WAY STEERING

The 4-way steering option enables you to handle long loads in tight spaces.

HYDRAULICALLY OPERATED SUPPORTS

The hydraulically operated supports enable you to place even the heaviest load in front of the wheels.



KINGLIFTER OFFICES AND DISTRIBUTORS



1. TERBERG KINGLIFTER HQ

Baronieweg 23a, 3403 NL IJsselstein
The Netherlands
Phone +31 30 221 90 70
Fax +31 30 221 90 71
E-mail info@terbergkinglifter.eu

2. AUSTRIA

Dunst Grafenschachen
dunst-hydraulik.com

3. BELGIUM

Terberg Tractors Belgium Oostakker
terbergtractorsbelgium.be

4. CYPRUS

Dementriades Lemosos
demetriadeshandling.com

5. DENMARK

NP Trucks Horsens
nptrucks.dk

6. FINLAND

Sigma Trukit Oy Helsinki
sigmatrukkit.fi

7. FRANCE

Manuloc Metz
manuloc.fr

France Truck Paris
francetruck.com

Gusmerini Manutention
gusmerini-manutention.fr

8. GERMANY

Terberg Kinglifter GmbH Hamburg,
Bochum, Elchingen
terberg-kinglifter.de

9. ITALY

Manuport Genua
manuport.it

10. NORWAY

Donovan Nordic Marnadal
donovannordic.com

11. SPAIN

Cosmea Granda Asturias
cosmeagranda.com

12. SWEDEN

SwTL Enksping
swtl.se

13. SWITZERLAND

Arbor Boll BE
arbor-ag.ch

14. UNITED KINGDOM

Bennie Equipment Northamptonshire
bennieequipment.co.uk

15. POLAND

ZPW Biala Nyska zpw.
nysa.pl

Danbud, Kozminek
czesciterberg@wp.pl

16. SOUTH AFRICA

Eqstra
Pomona, Kempton Park
eigroup.co.za

17. AUSTRALIA

Hartrite Mobile Hydraulic Equipment
Penrith
hartrite.com.au

KINGLIFTER HEAD OFFICE

Baronieweg 23a, 3403 NL IJsselstein, the Netherlands
T 31 30 221 90 70, E info@terbergkinglifter.eu
I terbergkinglifter.eu

Copyright Terberg 2021.

The information in this brochure may be changed without prior notice. The illustrations and information in this brochure may show, or refer to, optional items.